

efi REGGIANI POWER

Digital Printer

for Direct Printing on Fabric and Paper



Release
the POWER

Give POWER to your productivity

With its outstanding performance, extended uptime and low maintenance needs, the EFI™ Reggiani POWER is the perfect industrial textile digital printer to increase your productivity and printing capability, without compromising on quality or flexibility.

POWER delivers the unparalleled reliability EFI Reggiani has built its worldwide leadership on over many years. Let POWER bring your factory to the next level for faster, smoother, and more efficient production.

At a glance:

Enhanced ink recirculation system

- Superior versatility to manage a wider variety of inks
- Dramatic reduction of maintenance needs and stoppages
- Increased tolerance to environmental conditions

New EFI Reggiani printing software

- Real-time image processing
- Printing parameters and geometry change on the fly
- Easy-to-plan and flexible queue and job list

Proprietary head electronics

- Simplified print carriage layout for quicker set up time and increased reliability
- Easy printing head removal
- Quick and tool free head alignment

APPLICATIONS	
Fashion	✓
Home textile	✓
Sportswear & Footwear	✓
Outdoor	✓
INKS	
Disperse direct	✓
Reactive	✓
Acid	✓
Disperse sublimation	✓
Textile pigment	✓

SUBSTRATES	
Cotton	✓
Polyester	✓
Polyamide	✓
Silk	✓
Viscose	✓
Polyester and elastane	✓
Polyamide and elastane	✓
Blends	✓
Wool	✓
Sublimation paper	✓

Features

- 32 printing heads with full variable drop size
- Ink management: in-line continuous degassing and filtering
- Printing head crash protective system
- High-precision transportation belt
- EFI Reggiani exclusive dynaplast roll compensating step vs continuous movement
- Adhesion methods: thermoplastic, permanent, resin
- Embedded magnetic system for adhesive application
- Belt washing with both continuous and stop-and-go capabilities with air blade included
- Integrated environmental sensor
- Integrated water filtration system
- Ink system open to certified suppliers
- High uniformity printing modes
- Easy-to-use print controls
- Alert manager
- Possibility to monitor and export all printing and printer data to an external DB or ERP
- EFI Reggiani printing server: equipped with RAID 5 high-speed disks, providing high data transfer and redundancy. Incorporated UPS for data security
- Software open to main RIP vendors

Advantages

- Outstanding performance and extended uptime thanks to reduced maintenance needs
- Quick set up time and superior reliability
- Best handling and adhesion for any textile substrates
- Suitable for 24/7 operation
- One operator can manage multiple printers in action
- Multiple customisations available

Improvements

- Innovative and adaptive GUI
- Job editor: what you see is what you get in each and every moment
- Flexible queue management
- Ink consumption calculation
- Improved aesthetics with new look and feel

EFI Reggiani POWER*			
RESOLUTION	PASS	LM/H	SQM/H
600 x 300	1	680	1020
600 x 600	2	385	580
600 x 900	3	260	390
600 x 1200	4	195	295

* Paper configuration: double ink laydown at same speed



Specifications

- Printing width 180-240-340 cm
- Production speed up to 1020 sqm/h
- Printing heads 32
- Drop size from 4 to 72 pl
- DPI up to 2400

Fabric configuration

- Fabric weight from 30 to 450 gr/sqm
- **Fabric feed (Entry):**
 - small roll unwinder up to \varnothing 400 mm
 - big roll unwinder (A frame) up to \varnothing 1,600 mm
- **Fabric take-up (Exit):**
 - fold
- **Dryer:**
 - two industrial chambers

Optional

- **Fabric feed (Entry):**
 - fold
 - segmented roller
- **Fabric take-up (Exit):**
 - small roll winder up to \varnothing 400 mm
 - fold and small roll winder up to \varnothing 400 mm
 - big roll winder (A frame) up to \varnothing 1,600 mm
- **Dryer:**
 - additional industrial chambers

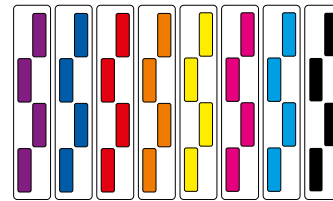
Paper configuration

- **Paper feed (Entry):**
 - standard roll unwinder up to \varnothing 400 mm
 - jumbo roll unwinder up to \varnothing 900 mm
- **Paper take-up (Exit):**
 - jumbo roll winder up to \varnothing 900 mm
 - revolving winder turret (2 rolls up to \varnothing 350 mm)
- **Dryer:**
 - one/two industrial chambers

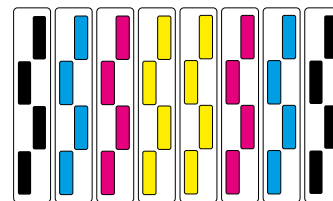
EFI Reggiani POWER:

regulatory model ReNOIR 180, ReNOIR 240, ReNOIR 340

Fabric carriage configuration



* Further colour configurations available



* Further colour configurations available, including Fluo

EFI fuels success.

We develop breakthrough technologies for the manufacturing of signage, packaging, textiles, ceramic tiles, and personalised documents, with a wide range of printers, inks, digital front ends, and a comprehensive business and production workflow suite that transforms and streamlines the entire production process, increasing your competitiveness and boosting productivity.

Visit www.efi.com/reggiani or call +39 035 3844511 for more information.



Nothing herein should be construed as a warranty in addition to the express warranty statement provided with EFI products and services.

The APPS logo, AutoCal, Auto-Count, Balance, BESTColor, BioVu, BioWare, ColorPASS, Colorproof, ColorWise, Command WorkStation, CopyNet, Cretachrom, Cretaprint, the Cretaprint logo, Cretaprinter, Cretaroller, Digital StoreFront, DocBuilder, DocBuilder Pro, DockNet, DocStream, DSFdesign Studio, Dynamic Wedge, EDOX, EFI, the EFI logo, Electronics For Imaging, Entrac, EPCount, EPPPhoto, EPRegister, EPStatus, Estimate, ExpressPay, FabriVU, Fast-4, Fiery, the Fiery logo, Fiery Driven, the Fiery Driven logo, Fiery JobFlow, Fiery JobMaster, Fiery Link, Fiery Navigator, Fiery Prints, the Fiery Prints logo, Fiery Spark, FreeForm, Hagen, InkIntensity, Inkware, LapNet, Logic, Metrix, MicroPress, MiniNet, Monarch, OneFlow, Pace, Pegasus, Pegasus Vision, PhotoXposure, PressVu, Printcafe, PrinterSite, PrintFlow, PrintMe, the PrintMe logo, PrintSmith, PrintSmith Site, PrintStream, Print to Win, Prograph, PSI, PSI Flexo, Radius, Remoteproof, RIPChips, RIP-While-Print, Screenproof, SendMe, Sincolor, Splash, Spot-On, TrackNet, UltraPress, UltraTex, UltraVu, UV Series 50, VisualCal, VUTEK, the VUTEK logo, and WebTools are trademarks of Electronics For Imaging, Inc. and/or its wholly owned subsidiaries in the U.S. and/or certain other countries.

All other terms and product names may be trademarks or registered trademarks of their respective owners, and are hereby acknowledged.

© 2019 ELECTRONICS FOR IMAGING, INC. ALL RIGHTS RESERVED. | WWW.EFI.COM