

G2 Mini-TEX



High Speed Textile
Industrial Digital Printer

Reliable And Brilliant Multi-Ink Application Solution For Textile Industrial Digital Printing



- Humanized Design, Durability And Easy To Use
- Max. 32 Pcs Of Print Head, Max. Colors Up To 8
- Printing Width: 2000mm
- The Unique Ink System Is Compatible With: Reactive, Acid, Disperse And Pigment Ink
- Applicable To Various Textile Fabrics

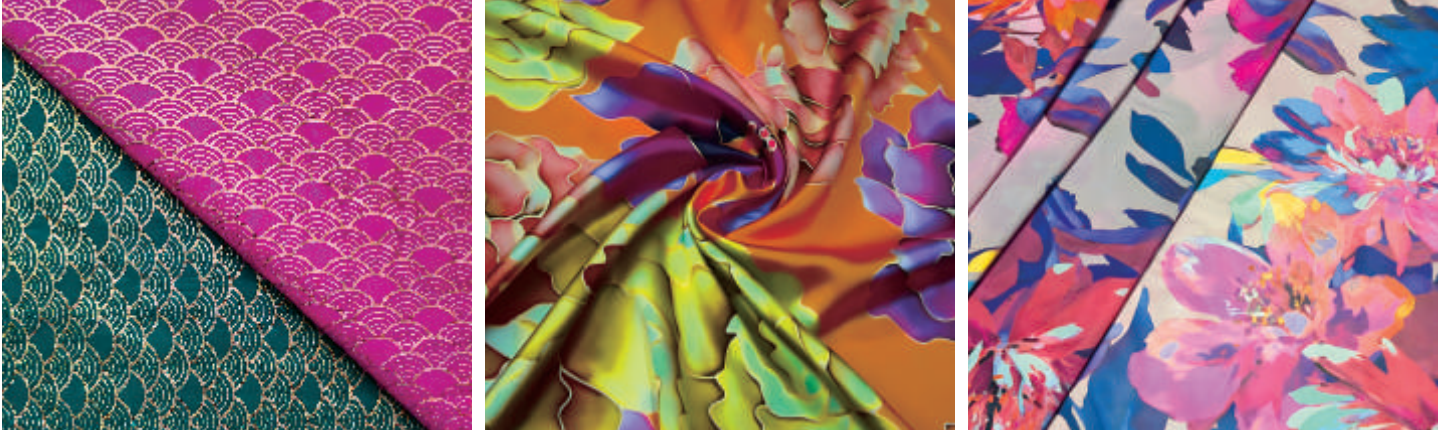


EASY TO USE

- Manual/Automatic Dual Operation Functions, One-Click Start Operation
- Flexible Queues Management For Continuous Printing, Unattended Production
- Front/Rear Operation Touch Screen With Interlock Protection, Easier And Safety
- One-Click Sample Printing Button, Simplifies The Sample Printing Work
- Real-Time Display Of Printing Progress, Ink Consumption Calculation, Convenient For Ink Management
- Real-Time Monitoring Of Equipment Operating Status

OUTSTANDING PRINTING TECHNOLOGY

The High-Precision Industrial Mechanical Design And Sophisticated Motion Control System Makes A High Quality Printing Performance.



Mechanical

- Special Design Of The Steel Beam Structure,
Reducing The Risk Of Deformation Of The Beam
- High-Precision Transportation Belt And
Transmission Parts

Ink Supply System

- Completely ink Circulating System
- Individual Temperature Control System Of Each Bar
- Precise Negative Pressure Control
- Deforming Device

Software and Motion Controls

- Self-Developed Printing Software Designed For Textile Printing
- Unique Feathering Mode, Customized Feathering Files According To Pattern,
Reducing The Overlap Problem
- Tailor-Made Printing Mode, Corresponding Printing For Different Pattern
- Partition Control Nozzle Voltage, Minimize Nozzle Color Difference
- Accurate Waveform Files
- Durable Motion Control System

BELT WASHING SYSTEM

- Advanced Belt Washing System Design, Dual Sink Design, Independent Water Supply And Drainage
- Equipped With Double Brush Rollers, Sponge Rollers, Air Blade, Water-Absorbing Rollers And Drying System, Effectively Ensures The Stickiness Of The Belt
- The Scraper Can Adjust The Angle According To The Cleaning Effect



FABRIC FEEDING SYSTEM

- Quick Disassembly Design For Easy Transportation And Installation
- Compatible Feeding System, Equipped With Expansion Centering And Constant Tension Device; Applicable For Various Fabrics
- The Pressing Roller With Heating Function, Continuous Step Compensation And Continuous Movement function
- **2000mm** Of Printing Width Compatible To Various Fabrics Of Woven/Knitted
- Flexible Feeding System For Jumbo / Small Roll

Technical Specification

| Model | G2 Mini-16(2*8) | G2 Mini-16(4*4) | G2 Mini-24(4*6) | G2 Mini-24(3*8) | G2 Mini-32(4*8) |
|--------------------------|----------------------------------------|----------------------------------------|----------------------------------------|----------------------------------------|----------------------------------------|
| Resolution (dpi) | 600~2400 | 600~2400 | 600~2400 | 600~2400 | 600~2400 |
| Drop Size (PL) | 5~16 | 5~16 | 5~16 | 5~16 | 5~16 |
| Number of Print Head | 16 | 16 | 24 | 24 | 32 |
| Max. Printing Width (mm) | 2000 | 2000 | 2000 | 2000 | 2000 |
| Number of Color Channel | 8 | 8 | 6 | 8 | 8 |
| Height of Platform (mm) | 980 | 980 | 980 | 980 | 980 |
| Fabrics | Cotton, Rayon, Silk, Polyester, etc | Cotton, Rayon, Silk, Polyester, etc | Cotton, Rayon, Silk, Polyester, etc | Cotton, Rayon, Silk, Polyester, etc | Cotton, Rayon, Silk, Polyester, etc |
| Inks | Reactive, Acid, Disperse, Pigment, etc | Reactive, Acid, Disperse, Pigment, etc | Reactive, Acid, Disperse, Pigment, etc | Reactive, Acid, Disperse, Pigment, etc | Reactive, Acid, Disperse, Pigment, etc |
| Air (MPa) | 0.6 | 0.6 | 0.6 | 0.6 | 0.6 |
| Power Supply | Three Phase 5 Wires 380v | Three Phase 5 Wires 380v | Three Phase 5 Wires 380v | Three Phase 5 Wires 380v | Three Phase 5 Wires 380v |
| Power (KW) | 20KW | 20KW | 20KW | 20KW | 20KW |
| Dimension (mm) (L*W*H) | 2700*5600*2300 | 2700*5600*2300 | 2700*5600*2300 | 2700*5600*2300 | 2700*5600*2300 |
| Weight (T) | 6 | 6 | 6 | 6 | 6 |

Printing Speed (Based on 1800mm Printing Width)

| Model | Print Head | Resolution (dpi) | Number Of Printing Pass | Double Direction Printing Speed(m ² /hr) |
|-----------------|------------|------------------|-------------------------|-----------------------------------------------------|
| G2 Mini-16(2*8) | Kyocera | 508*600 | 1 | 560 |
| | | 508*1200 | 2 | 314 |
| | | 508*1800 | 3 | 208 |
| | | 508*2400 | 4 | 150 |
| | | 600*600 | 1 | 499 |
| | | 600*1200 | 2 | 275 |
| | | 600*1800 | 3 | 182 |
| | | 600*2400 | 4 | 130 |
| G2 Mini-16(4*4) | Kyocera | 508*1200 | 2 | 660 |
| | | 508*2400 | 4 | 350 |
| | | 600*1200 | 2 | 590 |
| | | 600*2400 | 4 | 310 |
| G2 Mini-24(4*6) | Kyocera | 508*600 | 1 | 990 |
| | | 508*1200 | 2 | 609 |
| | | 508*1800 | 3 | 439 |
| | | 508*2400 | 4 | 326 |
| | | 600*600 | 1 | 902 |
| | | 600*1200 | 2 | 541 |
| | | 600*1800 | 3 | 370 |
| | | 600*2400 | 4 | 288 |
| G2 Mini-24(3*8) | Kyocera | 508*600 | 1 | 764 |
| | | 508*1200 | 2 | 440 |
| | | 508*1800 | 3 | 310 |
| | | 508*2400 | 4 | 231 |
| | | 600*600 | 1 | 680 |
| | | 600*1200 | 2 | 390 |
| | | 600*1800 | 3 | 274 |
| | | 600*2400 | 4 | 202 |
| G2 Mini-32(4*8) | Kyocera | 508*600 | 1 | 931 |
| | | 508*1200 | 2 | 562 |
| | | 508*1800 | 3 | 403 |
| | | 508*2400 | 4 | 313 |
| | | 600*600 | 1 | 841 |
| | | 600*1200 | 2 | 498 |
| | | 600*1800 | 3 | 354 |
| | | 600*2400 | 4 | 274 |

Making Industry Smarter Together!

DPI is committed to develop the industrial-grade digital inkjet printer, by virtue of the elite entrepreneurial team who have been deeply involved in the digital printing industry for many years, with the long-term accumulation of digital inkjet technology, the profound understanding of the needs of industrialized digital printing, and global supply chain management system. Providing innovative digital printing process solutions, serving different industrial fields such as building materials, textiles and packaging, etc..